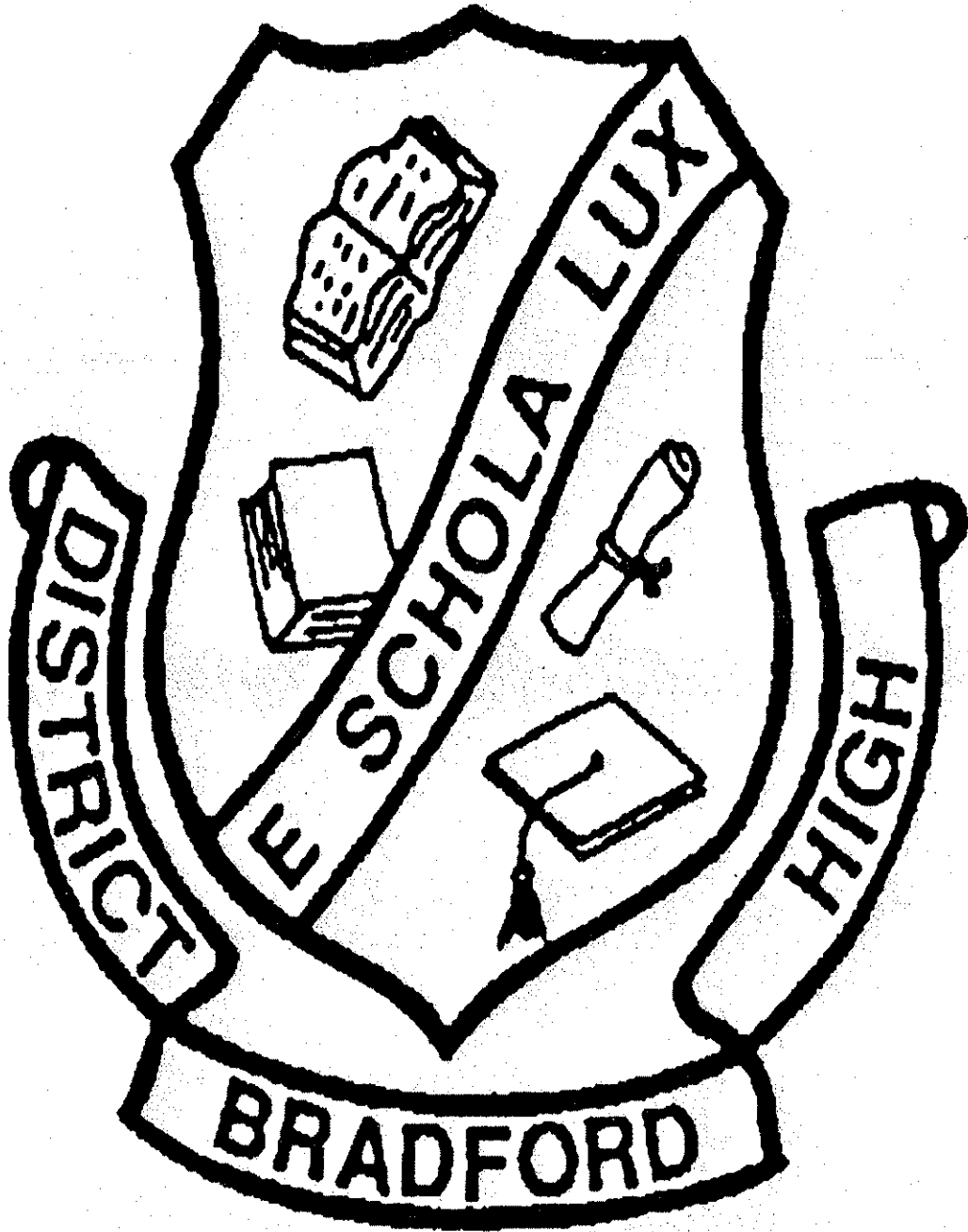


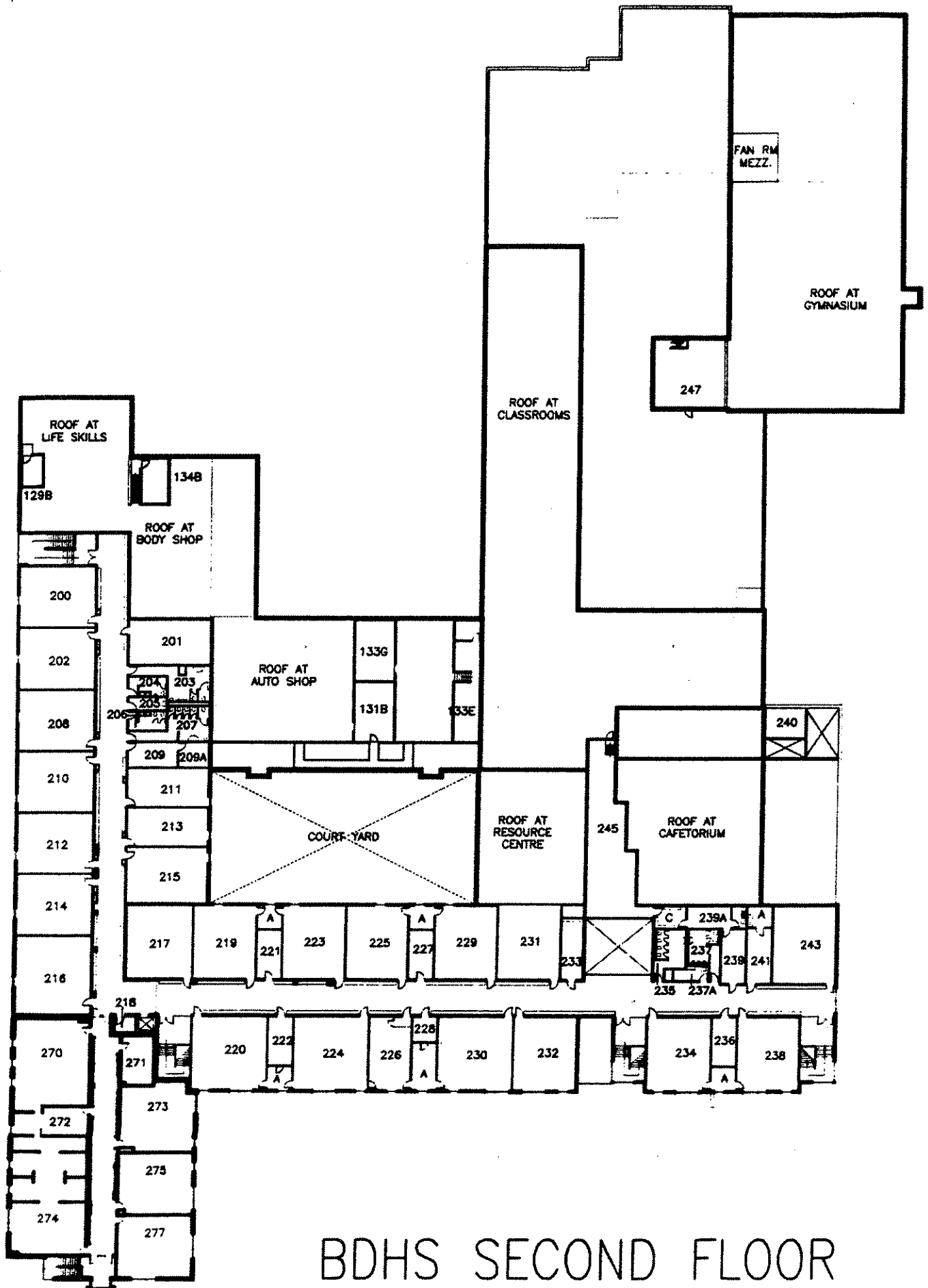
# BRADFORD D.H.S.

S  
T  
A  
F  
F

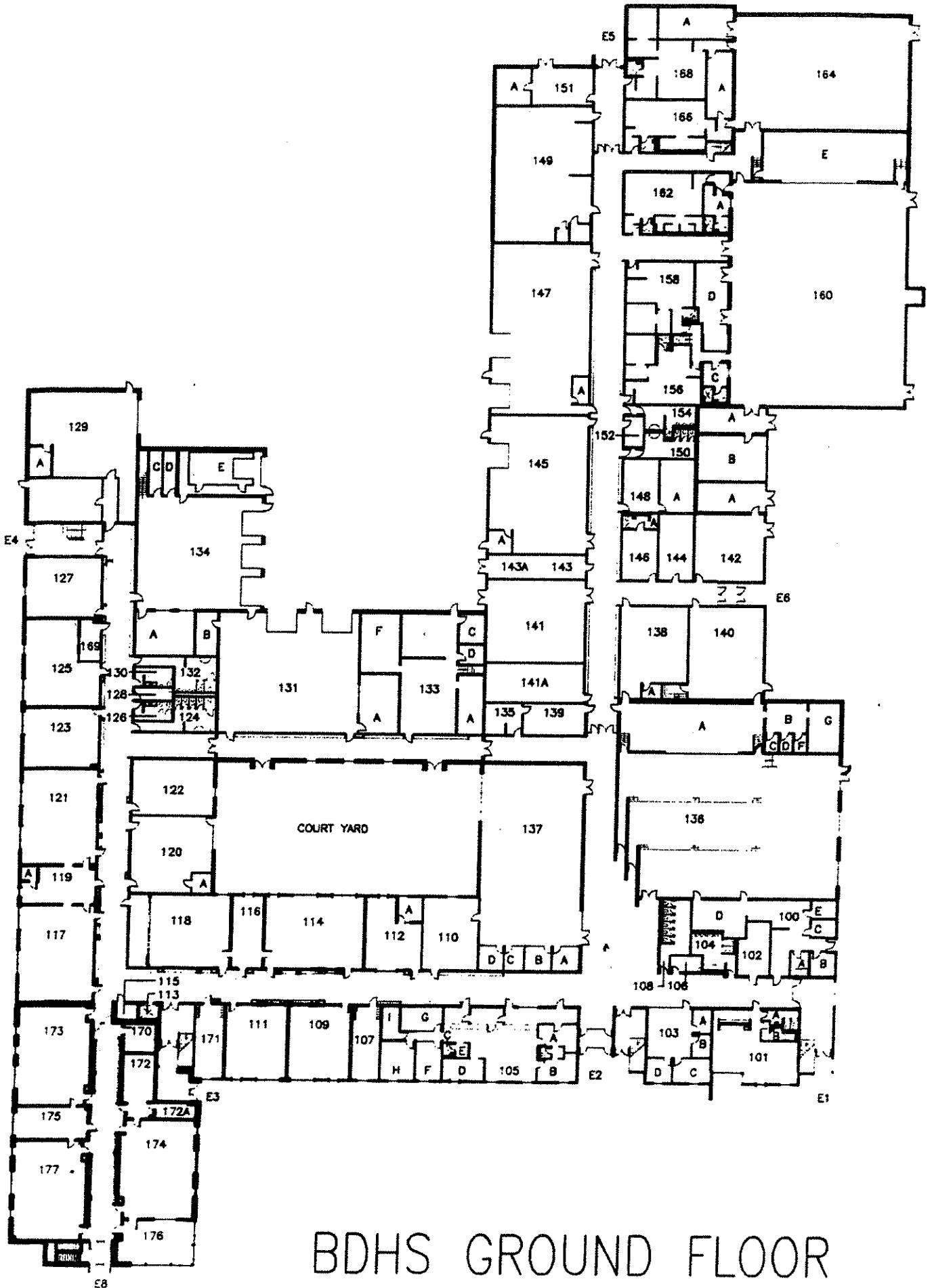


H  
A  
N  
D  
B  
O  
O  
K

2008-2009



BDHS SECOND FLOOR

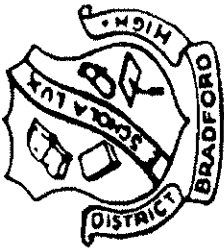


BDHS GROUND FLOOR



# ACHIEVEMENT & PERFORMANCE FOR EXCELLENCE

<p style="text-align: center;"><b>The Leader</b></p> <p><i>Demonstrates commitment to and mastery of learning, and encourages others to do the same</i></p>	<p style="text-align: center;"><b>The Participant</b></p> <p><i>Carries out responsibilities in an adequate way, but does not take on a leadership role</i></p>	<p style="text-align: center;"><b>The Detractor</b></p> <p><i>Doesn't meet the standards, and detracts others from meeting the standards</i></p>
<p style="text-align: center;"><b>P</b>ERFORMANCE</p> <ul style="list-style-type: none"> <li>✓ Arrives on time with materials</li> <li>✓ Is focused and has an excellent work ethic</li> <li>✓ Advances the goals of the class               <ul style="list-style-type: none"> <li>◆ through personal contributions</li> <li>◆ by assisting others</li> </ul> </li> <li>✓ Encourages teamwork and leadership in others</li> <li>✓ Does his/her part in group tasks</li> <li>✓ Encourages the development of character attributes in others</li> </ul> <p><b>Demonstrates Excellent</b></p> <ul style="list-style-type: none"> <li>✓ Teamwork</li> <li>✓ Initiative</li> <li>✓ Willingness to work with others</li> <li>✓ Strong persistence</li> <li>✓ Dedication</li> <li>✓ Curiosity</li> <li>✓ Enthusiasm</li> <li>✓ Commitment to Character</li> </ul>	<ul style="list-style-type: none"> <li>• Arrives on time with materials</li> <li>• Is usually focused and has an OK work ethic</li> <li>• Functions adequately-not leading, but not detracting</li> <li>• Rarely, if ever, demonstrates the ability to organize and lead groups</li> <li>• Assumes adequate responsibility for group tasks (not leading others, but not detracting either)</li> </ul> <p><b>Demonstrates Adequate (lacks intensity &amp; consistency)</b></p> <ul style="list-style-type: none"> <li>• Teamwork</li> <li>• Initiative</li> <li>• Willingness to work with others</li> <li>• Strong persistence</li> <li>• Dedication</li> <li>• Curiosity</li> <li>• Enthusiasm</li> <li>• Commitment to Character</li> </ul>	<ul style="list-style-type: none"> <li><input checked="" type="checkbox"/> Does not arrive on time with materials</li> <li><input checked="" type="checkbox"/> Is rarely focused and has a poor work ethic</li> <li><input checked="" type="checkbox"/> Is not working at an adequate level and detracts from the class' ability to function properly</li> <li><input checked="" type="checkbox"/> Does not organize or lead groups (in fact he/she detracts groups from accomplishing goals)</li> <li><input checked="" type="checkbox"/> Assumes no responsibility for group tasks and detracts the group from functioning properly</li> </ul> <p><b>Demonstrates Poor</b></p> <ul style="list-style-type: none"> <li><input checked="" type="checkbox"/> Teamwork</li> <li><input checked="" type="checkbox"/> Initiative</li> <li><input checked="" type="checkbox"/> Ability to work with others</li> <li><input checked="" type="checkbox"/> Persistence</li> <li><input checked="" type="checkbox"/> Dedication</li> <li><input checked="" type="checkbox"/> Curiosity</li> <li><input checked="" type="checkbox"/> Enthusiasm</li> <li><input checked="" type="checkbox"/> Commitment to Character</li> </ul>
<p style="text-align: center;"><b>A</b>CHIEVEMENT</p> <ul style="list-style-type: none"> <li>✓ Actively works towards reaching the highest level of achievement (obtaining a personal best!)</li> <li>✓ Actively assists others to achieve their personal best</li> </ul> <p><b>Demonstrates exemplary skills at working towards excellence in:</b></p> <ul style="list-style-type: none"> <li>✓ Organization</li> <li>✓ Time Management</li> <li>✓ Note-Taking</li> <li>✓ Computer skills</li> <li>✓ Reading</li> <li>✓ Writing</li> <li>✓ Numeracy</li> </ul>	<ul style="list-style-type: none"> <li>• Demonstrates an adequate desire to achieve; not concerned about achieving a personal best</li> <li>• Does not assist others to achieve their personal best; but does not detract from others' ability to meet their goals</li> </ul> <p><b>Demonstrates adequate skills in working towards excellence in:</b></p> <ul style="list-style-type: none"> <li>• Organization</li> <li>• Time Management</li> <li>• Note-Taking</li> <li>• Computer skills</li> <li>• Reading</li> <li>• Writing</li> <li>• Numeracy</li> </ul>	<ul style="list-style-type: none"> <li><input checked="" type="checkbox"/> Demonstrates little or no desire to achieve a personal best</li> <li><input checked="" type="checkbox"/> Detracts from the class' ability to work productively</li> <li><input checked="" type="checkbox"/> Detracts from others' ability to meet their goals</li> </ul> <p><b>Does NOT demonstrate skills in working towards excellence in:</b></p> <ul style="list-style-type: none"> <li><input checked="" type="checkbox"/> Organization</li> <li><input checked="" type="checkbox"/> Time Management</li> <li><input checked="" type="checkbox"/> Note-Taking</li> <li><input checked="" type="checkbox"/> Computer Skills</li> <li><input checked="" type="checkbox"/> Reading</li> <li><input checked="" type="checkbox"/> Writing</li> <li><input checked="" type="checkbox"/> Numeracy</li> </ul>
<p style="text-align: center;"><b>ASSISTS OTHERS TO IMPROVE THEIR ACHIEVEMENT, SKILLS AND PERFORMANCE</b></p>	<p style="text-align: center;"><b>DOES NOT ASSIST OTHERS, BUT IS NOT DETRACTING TO OTHERS EITHER</b></p>	<p style="text-align: center;"><b>DOES NOT ASSIST OTHERS AND DETRACTS FROM OTHERS' ABILITY TO ACHIEVE</b></p>



# COMPLETION OF COMMUNITY INVOLVEMENT ACTIVITIES

Student's Name \_\_\_\_\_

School: \_\_\_\_\_  
Principal: \_\_\_\_\_  
School Telephone: \_\_\_\_\_

Activity	Number of Hours	Date(s) of Completion	Organization & Phone Number	Supervisor's Name	Supervisor's Signature

Total Hours

Student's Signature: \_\_\_\_\_  
Parent's / Guardian's Signature: \_\_\_\_\_  
Date: \_\_\_\_\_

*For Office Use Only*  
Community Service hours have been noted in the student's OSR.  
Signature of School Official: \_\_\_\_\_

## Kids Help Phone

1-800-688-6868

[www.kidshelphone.ca](http://www.kidshelphone.ca)

Anonymous and confidential help with personal problems and counselling.

Call them with any concerns.

### Sexuality

[www.pflag.ca](http://www.pflag.ca)

1-888-530-6777

Answers and support for questions about any type of sexuality.

### Suicide / Crisis

310-COPE

Mental Help Crisis Line

1-888-893-8333

### Children's Aid Society

1-800-661-5311

[www.oacas.org](http://www.oacas.org)

Call if you have concerns about anyone under the age of 16 being hurt by an adult.

### Addictions

Drug & Alcohol Information Line

1-800-463-6273

Alcoholics Anonymous

[www.aa.org](http://www.aa.org)

1-888-425-2666

A support group for alcoholics of any age.

Ala-non/Ala-teen

[www.alateen.org](http://www.alateen.org)

1-888-425-2666

A support group for friends and family of alcoholics.

Ontario Problem Gambling

1-888-230-3505

### Pregnancy

Telehealth Ontario

1-866-797-0000

Speak to a nurse confidentially with questions about pregnancy.

Aids & Sexual Health Info

1-800-668-2437

### 211 Ontario

Dial 211 from any phone [www.211ontario.ca](http://www.211ontario.ca)

A search engine to connect you with local information on social services such as housing, abuse, counselling, food, legal help and much more.